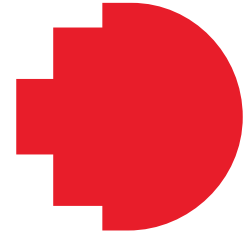


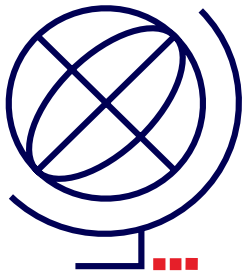
2024

College of Business and Law Research and Innovation



Overview

Research within CoBL



The College of Business and Law (CoBL) undertakes rigorous and evidence-based research that informs policy and business practice and supports action on business, ethical and social issues.

Our research covers a broad range of business disciplines, reflecting the core activities of our Schools: Law; Economics; Finance; Marketing; Management; Accounting; Supply Chain; and Information Systems.

The College hosts several research centres and groups that are distinguished by their commitment to research excellence, multi-disciplinary perspectives, and strong links to industry.

We provide a cohesive and supportive environment to our nationally and internationally established researchers, and nurture our postgraduate candidates and our emerging researchers.

Our research is industry relevant and translatable, and we welcome opportunities for collaboration and partnership.

Our results (2023)



\$5.6m

Total research income



66.4%

Publications in top quartile journals



643

Scopus publications

1.57

Average field weighted citation impact



64

HDR completions



288

HDR enrolments

Higher Degrees by Research

CoBL fosters a world-class research environment in which Higher Degree by Research (HDR) candidates produce cutting edge research and theses that facilitate shaping future society and innovation. One of the primary objectives is to assist candidates to address and solve real-world problems in industry, government, and community sectors.

Our HDR candidates graduate with broader capabilities, skills, and expertise. We provide professional opportunities in the form of workshops, seminars, debates, internships, professional development, keynotes, networking, and competitions to foster a strong intellectual climate, which promotes knowledge sharing and learning.

We offer eight HDR Programs (Accountancy; Business Information Systems; Supply Chain and Logistics; Economics, Finance and Marketing; Management; Business and Law). Our programs include an innovative coursework element that educates students in Research Philosophy and Design, Research Methods and Impact, HDR Practice, Advanced Seminars in Global Business and Law Research.



Internships

Solve complex business challenges and fast track research and development for your organisation through Higher Degree by Research (HDR) internships. A HDR internship is a hands-on engagement between a HDR candidate (Masters by Research or PhD) and an external organisation. Organisations have access to the latest insights and innovations from motivated HDR candidates who want to make an impact. Contact business.research@rmit.edu.au to enquire about our internships.

Research Expertise

The College has research expertise across a range of areas. This expertise is most evident within our research centres, which include:

- The Centre for Business and Human Rights (BHRIGHT)
- The Centre for Cyber Security Research and Innovation (CCSRI) (Cross-College with STEM)
- The Centre for Innovative Justice (CIJ)
- The Centre for International Development (CID)
- The Centre for Organisations and Social Change (COSC)
- The Digital Ethnography Research Centre (DERC) (Cross College with DSC)

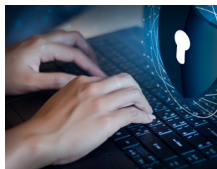
The College also has a number of School-based research groups, such as The Behavioural Business Lab, The Enterprise AI and Data Analytics Hub, and the Consumer Culture Insights Group. See the full list at: <https://www.rmit.edu.au/about/schools-colleges/college-of-business-and-law/research> Our Vietnam based research groups can also be viewed here: <https://www.rmit.edu.vn/about-us/schools-and-centres/the-business-school/research>

CoBL researchers are always looking for interesting and challenging industry problems to solve. Research partnerships can take many different forms, including collaborations, sponsorships and contract research. Visit <https://www.rmit.edu.au/for-business/research-partnerships> to find out more and to partner with us.

Our research website hosts the CoBL thought leadership blog – Acumen, social impact case studies, and our research capability statements. To find out more about our research visit <https://www.rmit.edu.au/about/schoolscolleges/college-of-business-and-law/research/research-showcase>.

Impact Case Studies

CoBL's research influences policy and legislation, contributes to healthier communities, and optimises processes and ways of working. Creating economic, environmental, cultural, societal, health and policy impact underpins our research. The following are examples of our research impact:



Australian Women in Cyber Security

Created recognition for the importance of fostering a diverse and inclusive workforce, encompassing various social, cultural, and professional backgrounds. **Partner: Australian Women in Security Network (AWSN).**



Leaving Rehab: Enhancing Transitions into Stable Housing

Informed the public conversation on stable housing, garnered significant media coverage and informed various government reports. Additionally, findings informed an ARC Linkage Project aimed at delving deeper into this critical issue. **Partner: Australian Housing and Urban Research Institute (AHURI).**



Cryptocurrency Regulation

Equipped law enforcement and government agencies with empirical data on crypto-related legal proceedings, enriching their ability to navigate investigations in this domain, and helping to better understand the legal constraints in investigating matters involving cryptocurrency.



Resilient Towns Initiative

Advanced various small towns' disaster preparedness levels, created youth forums, tailored emergency preparedness plans, created frameworks for stakeholder mapping for towns, and influenced the creation of small grants to improve infrastructure. **Partners: Red Cross, Anglicare, and NSW Reconstruction.**



Energy Transitions in the Transport Sector

Provided policy advice and a roadmap for Victoria, to help stakeholders better understand the full implications of public transport electrification and further explore EV policy, strategy, and regulation.



Shaping Connections

Guided policy formation, refined home support approaches, and inspired the creation of digital and social connectivity initiatives in local communities, fostering healthier and more supportive environments for older adults. **Partner: The University of Third Age (U3A).**

Contact us

445 Swanston Street
Melbourne VIC 3000

rmit.edu.au/contact-us

For all research enquiries contact the
[College of Business Research Office](#)

business.research@rmit.edu.au

Connect with RMIT

