

# Get a head start on your career.

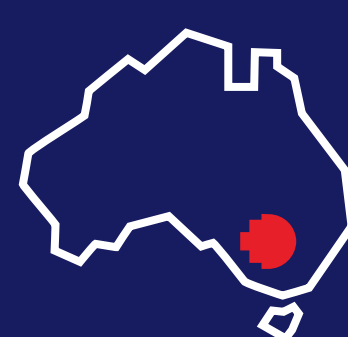
# Begin your studies in October!\*



**The world is moving fast, so don't wait for 2024 to start your dream degree or study pathway in Melbourne.**

RMIT University's October intake\* means you can fast-track your journey towards a globally recognised qualification at one of Australia's oldest tertiary institutions.

RMIT's state-of-the-art facilities, industry-focused learning opportunities and international reputation with employers are just a few of the reasons why over 90,000 students from 194 different countries choose to study with us.



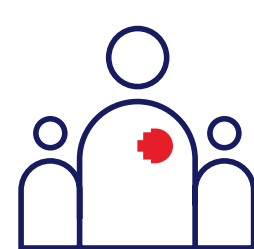
**TOP  
10**  
in Australia

for Computer Science  
and Information Systems<sup>1</sup>



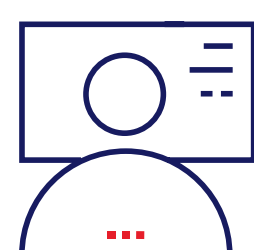
**TOP  
150**  
universities  
in the world<sup>2</sup>

## Why start studying in October?\*



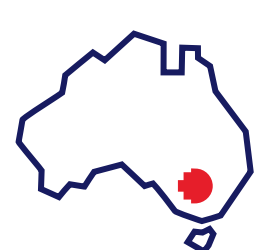
### Stand out from other graduates

Finish your degree sooner than students who are waiting until 2024, and get a head start on your goals.



### Experience smaller class sizes

Spend more time with your teachers, enjoy a more personalised learning experience and access free study support.



### Live and work in Melbourne

Find a summer job with the help of RMIT's career services, make friends and explore Australia's top city for international students.<sup>3</sup>



**Discover Business, Science  
and Technology courses that  
start in October\***

[rmit.edu.au/october](https://rmit.edu.au/october)



\*The Diploma of Business commences in September.  
^Finishing your studies earlier is subject to course sequencing, availability, and academic progression.  
1 QS World University Rankings by Subject 2023  
2 QS World University Rankings 2024  
3 QS Best Student Cities Ranking for 2023

CRICOS Provider Code: 00122A | RTO Code: 3046



**Michael Palermo**  
Business student

One of the highlights in my course was the 12-month practical placement. I learned a great amount on the job, got the opportunity to put theory into practice and made many friends, business connections and mentors.

[rmit.edu.au](https://rmit.edu.au)