

# RMIT UNIVERSITY PATHWAYS



**OPEN UP YOUR GLOBAL OPPORTUNITIES**

**OUR MISSION IS TO PROVIDE  
TRANSFORMATIVE,  
SUPPORTIVE LEARNING  
EXPERIENCES AND PATHWAYS  
WHICH OPEN UP GLOBAL  
POSSIBILITIES FOR OUR  
COMMUNITY OF LEARNERS.**

# WOMIN DJEKA

# WELCOME



Jake Heinrich  
CEO, RMIT UP

I'm Jake Heinrich, the CEO of RMIT University Pathways, known as RMIT UP.

RMIT UP gives you a direct pathway to further study with RMIT University, a global university of technology, design and enterprise.

RMIT University was established in 1887. Today, it is one of the world's top 150 universities, known for excellence in education and applied research.

RMIT is number 1 in Australia for both Art and Design, and Architecture/Built Environments, based on the QS World University Rankings by Subject 2025.

RMIT UP is part of RMIT University. We specialise in English Pathways and Foundation Studies programs for international students, designed to give you the skills you need to succeed at university.

You will be taught by our dedicated, supportive teachers. They will guide you towards your goals with encouragement and genuine care.

Located in the vibrant heart of Melbourne, RMIT UP is part of the main RMIT University campus. We are co-located with Scape Australia, the largest provider of student accommodation in the country, meaning you can now live and learn in one secure, dynamic location.

Life at RMIT UP extends far beyond the classroom. Our students enjoy events and excursions run by our in-house Student Experience team, allowing you to connect with peers from all corners of the globe.

We look forward to welcoming you into the RMIT community.

Jake Heinrich  
CEO, RMIT UP



# WHY CHOOSE RMIT?



**#1**

**IN AUSTRALIA FOR ART AND DESIGN  
QS RANKINGS BY SUBJECT 2025**

**#1**

**IN AUSTRALIA FOR ANIMATION STUDIES  
(5TH GLOBALLY FOR TOP INTERNATIONAL  
ANIMATION DEGREE PROGRAMS) 2024  
ANIMATION CAREER REVIEW RANKINGS**

**#1**

**IN AUSTRALIA FOR  
ARCHITECTURE/BUILT ENVIRONMENT  
QS RANKINGS BY SUBJECT 2025**

**#10**

**GLOBALLY FOR BUSINESS ADMINISTRATION  
2024 GLOBAL RANKING OF ACADEMIC  
SUBJECTS, ARWU.**

**TOP 150**

**OF UNIVERSITIES WORLDWIDE  
(123 GLOBALLY, 10 NATIONALLY)  
2025 QS WORLD UNIVERSITY RANKINGS**

**430+**

**INTERNATIONALLY RECOGNISED  
PROGRAMS**

**90,000+**

**STUDENTS FROM 190+ COUNTRIES AND  
TERRITORIES STUDYING WITH RMIT**

[STUDY WITH US →](#)



# MOVING TO MELBOURNE



Consistently ranked as one of the world's most liveable cities and the best student city in Australia, Melbourne is safe, welcoming, and culturally diverse. It's also Australia's cultural, arts and sporting capital, meaning there is always so much to see and do!



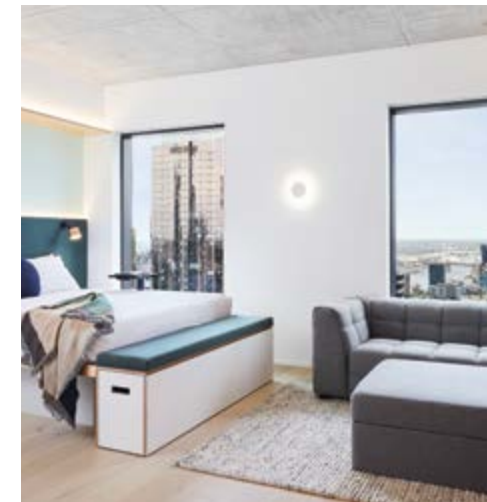
## LIFESTYLE AND CULTURE

Explore everything Melbourne has to offer, from museums and galleries, entertainment and sporting precincts to our thriving multicultural food scene.

## ACCOMMODATION

Melbourne is a safe, accessible and modern city. There are many housing options in Melbourne to explore, including student accommodation, private rentals, share houses and homestays. Find out more:

[MOVING TO MELBOURNE →](#)



## COST OF LIVING

How much should you budget for rent and bills? What about other daily costs such as groceries, public transport and takeaway? Get to know Melbourne's cost of living so you can be prepared for everyday life here:

[COST OF LIVING →](#)

## TRANSPORT

Travelling around Melbourne is easy and convenient. There are plenty of options for you to get around:

- Bike riding – make use of Melbourne's many bike paths and RMIT UP's bicycle storage facilities
- Public transport – Melbourne's trams, trains and buses are all accessible via a Myki card
- Ride share and scooters – established rideshare services such as Uber are easily available in Melbourne, as well as e-scooters for hire in the inner city





# LIVE & LEARN WITH RMIT UP & SCAPE

RMIT UP is co-located with Scape Franklin, a contemporary student accommodation facility owned by Scape, Australia's largest purpose-built student accommodation provider.

## SCAPE FRANKLIN

Our Franklin Street campus provides world class learning and accommodation in one secure, dynamic location in the heart of Melbourne.

Scape Franklin has beds for more than 800 domestic and international students, who come from all over the world to access Melbourne's high quality education. Discover life at Scape:

[SCAPE FRANKLIN →](#)

## UNDER 18

If you are an international student under 18 years old, welfare arrangements need to be in place to apply for your student visa. This is to ensure that you are living in a secure environment with adequate practical and emotional support to keep you safe before you turn 18.

Let RMIT UP students take you on a tour of our new campus:

[OUR CAMPUS →](#)



Living at Scape is one of the best decisions I could ever make. Before I used to live in a suburb, and it was exhausting travelling every day.

Now I have more time to go to the gym, do laundry, make my meals, study and hang out with my friends. It's definitely improved my time management 100%.

Laura Senas Murillo,  
RMIT UP English student and Scape Franklin resident



scape  
Student Living



# STUDENT LIFE

Our in-house Student Experience team runs a year-round calendar of events to help you to connect, have fun, and make new friends from all around the world.



## BE PART OF THE RMIT COMMUNITY

Our in-house Student Experience team hosts events and activities throughout the year. There are parties, BBQs, road trips, workshops, sightseeing opportunities and more! Socialise, make new friends, practise your English and build meaningful connections with students from all around the world.



## STUDENT AMBASSADORS

RMIT UP Student Ambassadors volunteer with the Student Experience team to assist with events, connect with other students, contribute to social media and share experiences as an international student.



## STUDENT SUPPORT

RMIT UP has specialist support services for students to encourage positive mental health, identify any problems early and build on strengths to overcome challenges. We offer educational programs, one-to-one counselling and other tailored services to meet students' needs.



## ACADEMIC SUPPORT

We provide free Academic Support for all Foundation Studies and English Pathways students. In-depth support by experienced professionals helps you to understand and correct any language problems, build skills and achieve success in your studies.



# MEET ZIGGY!



## INTRODUCING THE CUTEST AND MOST POPULAR MEMBER OF OUR STUDENT EXPERIENCE TEAM, ZIGGY!

Ziggy is a therapy dog, part of an Animal Assisted Therapy Program we run here at RMIT UP.

As a Therapy Dog, Ziggy provides a supportive and grounding presence, offering strength and encouragement. Spending time with Ziggy can reduce feelings of stress and anxiety, and increase feelings of satisfaction with life.

She's super friendly, and adores spending time with students! Ziggy is on campus every Monday.





# ENGLISH LANGUAGE PROGRAMS



## ACADEMIC LEVELS OVERVIEW: ELEMENTARY – ADVANCED PLUS

The English for Academic Purposes (EAP)\* course gives you the academic English skills you need to pathway into further study at RMIT University.

### OUR ENGLISH LANGUAGE PATHWAY TO UNIVERSITY:

- 6 academic levels: Elementary–Advanced Plus
- Each level delivered over 10 weeks (2 x 5-week modules)
- 20 hours of scheduled classes per week (plus independent learning)
- Small class sizes for improved learning (15–18 people)
- Academic support available

### RMIT UP ENGLISH LEVELS

Level of English needed to enter each RMIT level of study

Entry level:	3.5 no band < 3.0	4.0 no band < 3.5	4.5 no band < 4.0	5.0 no band < 4.5	5.5 no band < 5.0	6.0 no band < 5.5
<b>RMIT UP English level:</b>	Elementary (10 weeks)	Pre intermediate (10 weeks)	Intermediate (10 weeks)	Upper intermediate (10 weeks)	Advanced (10 weeks)	Advanced Plus (10 weeks)
				Foundation Studies and Diplomas	Associate Degree/Study Abroad	Bachelor/ Master's/ PhD

English for Academic Purposes (EAP) is an accredited course delivered by RMIT UP (CRICOS Course code: 076733A)

\*All programs listed in this guide are available to student visa holders as their principal course, or may be packaged with an RMIT University CRICOS registered award course. Our English programs are also available to other visa holders provided the length of enrolment at RMIT does not exceed the conditions of their visas.

### ENTRY REQUIREMENTS

To apply for the English for Academic Purposes course, you must complete one of the following:

- RMIT UP placement test
- IELTS English test
- TOEFL iBT English test
- Pearson PTE (Academic) English test

Your English language test results will indicate which academic level you will be eligible to enter.

Find out more about our English language programs:

[ENGLISH LANGUAGE PROGRAMS →](#)

### ELEMENTARY

Learn English to communicate in everyday situations.

Practise listening, speaking, reading and writing about the weather, activities, feelings, routines, giving directions and instructions, and likes and dislikes.

### PRE-INTERMEDIATE

Learn how to communicate in English about the present, past and future.

Describe objects, places and people. You will learn to make arrangements, suggestions and how to give instructions. You will read different styles of text and practise listening and speaking.

### INTERMEDIATE

Learn grammar and vocabulary to use in study and in everyday life.

You will write structured paragraphs and essays and describe graphs, practise reading and listening to news and other texts. You will express your opinions on a range of topics, supporting your ideas with reasons.

### UPPER-INTERMEDIATE

Develop and enhance your academic English skills.

You will learn grammar and vocabulary that will help you to understand complex texts. You will practise listening to lectures and writing academic essays and you will also participate in regular group discussions (tutorials) which will develop your speaking and listening skills.

### ADVANCED

Develop academic skills to prepare for university.

You will practise formal, academic writing and learn about academic referencing. You will take part in group discussions and work towards giving a formal, researched presentation on a topic of your choice.

### ADVANCED PLUS

Develop academic and research skills to prepare you for university in Australia.

You will conduct secondary research and present your findings in a written report and in an oral presentation. You will develop reading and listening skills to help you understand academic articles and lectures.



# WHO CAN PARTICIPATE IN AN ENGLISH STUDY TOUR PROGRAM?



Universities, schools and international organisations can choose to send 1–50+ students to participate in integrated classes with other students from all around the world and/or closed programs that can be designed to match your needs and feature industry visits or cultural excursions.

## **COURSE LENGTH AND PREREQUISITES**

Options vary from 4 weeks (minimum) up to 45 weeks. Students should be over 16 years old and require a student visa for programs over 10 weeks.

A minimum of 10 participants is required for closed programs.

## **STUDY TOUR SERVICES**

Group program packages include a high level of services for students including:

- Airport transfers (pick-up and return)
- Excursions and activities (optional)
- Accommodation (homestay) or city campus

Organisations seeking information about arranging a program can contact Ben Stubbs, Associate Director, Student Recruitment and Business Development, at [ben.stubbs@rmit.edu.au](mailto:ben.stubbs@rmit.edu.au)



# FOUNDATION STUDIES

RMIT University Foundation Studies is chosen by international students all over the world as their preferred pathway to higher education. Foundation Studies provides you with the knowledge, skills and confidence you need for your future academic success, and also gives you the opportunity to study subjects that align with your interests and study goals.

#### CHOOSE FROM STREAMS IN:

- Art, Design and Architecture
- Business
- Communication and Social Context
- Engineering and Science
- Health
- Information Technology (IT)

Foundation Studies is an accredited course delivered by RMIT UP (CRICOS Course code: 108492M)

#### ENGLISH LANGUAGE REQUIREMENTS

To study this program, you will need to complete one of the following English proficiency tests:

- IELTS (Academic): minimum overall band of 5.5 (with no individual band below 5.0)
- TOEFL (Internet Based Test – iBT): minimum overall score of 50 (with minimum of 5 in Reading, 5 in Listening, 14 in Speaking and 15 in Writing)
- Pearson PTE (Academic): minimum score of 42 (with no communication band less than 36)
- C1 Advanced: minimum of 162 with no less than 154 in any component
- Completion of RMIT EAP Upper-Intermediate (or higher)

#### ENTRY REQUIREMENTS

You must have successfully completed a senior secondary school qualification equal to an Australian Year 11 with a minimum overall average of 50% or pass average.

To determine your equivalent high school qualification to an Australian Year 11, please check relevant country requirements at RMIT Country Equivalency.

#### AGE REQUIREMENT

Students must be 16 years of age upon commencement of this program. Please note, meeting the minimum academic requirements does not guarantee entry. Your application will still need to be assessed and accepted.

Find out more about our Foundation Studies program:

[FOUNDATION STUDIES →](#)



“ Foundation Studies provided me with a strong understanding of the work expected at university. The skills I learned, such as documenting my design process, creating portfolios, model making, sketching, and photography, have been very helpful in my university studies. ”

Yi Ning Soh,  
Foundation Studies Art, Design and Architecture



# PROGRAMS FOR INTERNATIONAL STUDENTS

Find the right program for you at RMIT University. Browse bachelor, graduate, research and diploma programs and courses.

Find out more about RMIT programs:

[RMIT PROGRAMS →](#)

## VOCATIONAL EDUCATION

Gain the practical skills you need for excellent job prospects and credits towards RMIT University degrees.

## UNDERGRADUATE STUDY

RMIT offers a range of bachelor, associate and honours degrees. Find the right undergraduate program for you.

## POSTGRADUATE STUDY

RMIT's flexible postgraduate study options include graduate certificates, graduate diplomas and master's degrees.

## RESEARCH PROGRAMS

Undertake comprehensive research under the supervision of an expert academic and complete your master's or PhD at RMIT.



## Study Abroad Programs

Students who successfully complete an Advanced level English for Academic Purposes (EAP) program at RMIT UP are eligible for direct entry to a semester long Study Abroad program at RMIT University.

Find out more about Study Abroad programs:

[STUDY ABROAD PROGRAMS →](#)

## STUDY AREAS INCLUDE:

- Accounting, Information and Supply Chain
- Art
- Business and Law
- Computer Technologies
- Design
- Economics, Finance and Marketing
- Education
- Engineering
- Fashion and Textiles
- Global, Urban and Social Studies
- Health and Biomedical Sciences
- Law
- Management
- Media and Communication
- Property, Construction and Project Management
- Science
- Urban Design



# COURSE DATES & FEES



## RMIT UP English for Academic Purposes

2025

Module	Start Date	End Date	Fee
1	06 January	07 February	AU \$260 enrolment fee, AU \$520 tuition fee per week
2	10 February	14 March	
3	17 March	17 April	
4	28 April	30 May	
5	02 June	04 July	
6	21 July	22 August	
7	25 August	25 September	
8	06 October	07 November	
9	10 November	12 December	

2026

Module	Start Date	End Date	Fee
1	05 January	06 February	AU \$260 enrolment fee, AU \$545 tuition fee per week
2	09 February	13 March	
3	16 March	17 April	
4	27 April	29 May	
5	01 June	03 July	
6	13 July	14 August	
7	17 August	18 September	
8	28 September	30 October	
9	02 November	04 December	
10	07 December	26 February 2027	

## Foundations Studies 2025/26

### COURSE DATES AND FEES

Semester	Start Date	End Date	Fees
Semester 1 2025	28 January	06 June	AU \$29,350 (2025 total)
Mid-Semester	18 April	25 April	
Semester 2 2025	14 July	21 November	AU \$29,350 (2025 total)
Mid-semester break	15 September	19 September	
Semester 1 2026	27 January	05 June	AU \$31,400 (2026 total)
Mid-semester break	03 April	10 April	
Semester 2 2026	13 July	20 November	AU \$31,400 (2026 total)
Mid-semester break	14 September	18 September	

## REFUND POLICY

### REFUND POLICY

Refunds for commencing or newly enrolled international students apply to students who:

- are applying for or holding a student visa and are yet to enrol
- have withdrawn from all study in the first semester of a program

Applications for the process of refunds are made in line with RMIT's international students' refund and transfer policy:

[OUR REFUND POLICY →](#)



# READY TO APPLY?

Follow this step-by-step guide to apply to RMIT UP as an international student.

[START YOUR APPLICATION →](#)

- STEP 1 FIND A COURSE**
- STEP 2 CHECK THE ENTRY REQUIREMENTS**
- STEP 3 COLLECT THE REQUIRED DOCUMENTS**
- STEP 4 SUBMIT YOUR APPLICATION**

# OVERSEAS STUDENT HEALTH COVER

Students holding an Australian student visa are required to maintain valid Overseas Student Health Cover (OSHC) with an approved OSHC provider.

Learn more about student visas:

[STUDENT VISAS →](#)

I am so grateful that I undertook Foundation Studies. As English is my second language, it would be hard for me to understand new vocabulary and the format of exams if I did not study in Foundation. Foundation Studies is a great step before coming to university.

Ngoc Minh Khue Nguyen,  
Foundation Studies  
Engineering and Science

RMIT UP English was more than learning how to speak English well, it helped me to negotiate life in Melbourne. I was able to make a huge improvement in my language skills from level 2 to 7. If you want to be confident in your English, go to RMIT UP.

Abdulaziz Aldakkhelallah,  
RMIT UP English

RMIT Foundation Studies has been a stepping stone to my future studies. It acts as a bridge for us to understand how RMIT's curriculum and learning system works, what's expected of us, and what we can expect from the university.

Nicholas Marco Cahyono,  
Foundation Studies Communication  
and Social Context

The teachers took us through things step by step, from writing to listening, and everything in between. It was a really comfortable place to learn English.

Tatsuya Shigemitsu,  
RMIT UP English



# BEFORE YOU ARRIVE



Here is some helpful information to get you started with your plans to study abroad.

## APPLY FOR YOUR VISA

All international students must have a visa to study in Australia. Visa arrangements can take anywhere from a few weeks to six months to finalise, depending on the assessment level of your country and other requirements. For the most up-to-date and accurate advice, please refer to information from the Australian Department of Home Affairs: [www.homeaffairs.gov.au](http://www.homeaffairs.gov.au)

## PLAN YOUR TRAVEL

Once you've received your student visa, you can start organising your flights! When booking flights, make sure you arrive with plenty of time to attend any orientation, welcome and other sessions prior to your program start date.

## ORGANISE YOUR ACCOMMODATION

There are many accommodation options for international students in Melbourne. RMIT provides free services and resources to help you find somewhere to live that will suit your budget and preferences, with tailored support for under 18s.

## ARRIVING IN MELBOURNE

RMIT's free airport pick-up service is available to commencing international students who are:

- Under the age of 18, or
- An Australia Award Scholarship (AAS) recipient

Newly arriving international students who are not eligible for a free transfer can access a Cabcharge Digital Pass valued at \$100 for your transport from the airport to your accommodation.

## CONNECT TO YOUR CAMPUS

RMIT UP offers a huge range of study support, social activities and other services for international students to help you achieve your study goals and stay happy and healthy. You can connect to services and assistance before you arrive – including our social media accounts – to see what support is available to you.

See the back cover of this brochure for our social media accounts.

“ Leaving my home town, I honestly had no idea what to expect. But ever since I did I have truly been thriving. ”

Angeline Soenarjo,  
Foundation Studies, Art, Design  
and Architecture



# PARENTS AND GUARDIANS



RMIT University is one of the top universities in Melbourne, and one of Australia's oldest tertiary institutions. Our state-of-the-art facilities, industry-based learning and international reputation with employers are just a few of the reasons why over 90,000 students from over 190 countries and territories, choose to study with us.

## IS YOUR CHILD UNDER 18?

If your child will be under the age of 18 when they arrive in Australia, you must have their accommodation and welfare arrangements organised and approved either by the Department of Home Affairs or RMIT before they leave home. This is to ensure they have appropriate day-to-day support to keep them safe and well.

## ESTABLISHMENT COSTS

Before moving to Melbourne, we recommend putting aside \$AU3,000 – \$5,000 to cover set-up costs, such as their rental deposit (one month's rent in advance) as well as furniture and household items for those arranging their own accommodation.

Many student apartments come fully furnished, but most private rental homes do not. Ongoing costs will depend on your location, budget and lifestyle.

## OUR COMMITMENT

Our priority is ensuring your child is safe, healthy and happy during their studies in Melbourne.

RMIT UP and RMIT University offer a number of resources to make this possible for all our students.

## LANGUAGE SUPPORT

RMIT offers free English classes and full English courses for students wanting to improve their language skills. If your child feels they need extra help with English language or writing, we've partnered with Studiosity to provide personal support. They can chat one-on-one with

subject specialists on the platform anytime, 24/7, or submit their work for feedback.

## ACADEMIC SUPPORT

Academic Support is a free service for all Foundation Studies and RMIT UP English students. We help your child understand and correct any language problems, build skills and achieve success in their studies. Students can bring academic problems or questions for tailored one-to-one help. Academic Support services are available face-to-face as well as online.

## PEER-TO-PEER SUPPORT

RMIT UP Student Ambassadors are current, or recently graduated students, who volunteer with the Student Experience team to connect with students, assist with event coordination, and share their experiences as an international student at RMIT UP. RMIT University also has a number of initiatives in place to ensure your child has a positive study experience in Melbourne, including Kirrip, a club designed specifically to help students make social connections and other clubs and mentor programs.

## 24/7 CAMPUS SECURITY AND PATROL

The RMIT UP building has security guards on the ground floor, ensuring they know who is coming and going from the building.

RMIT University also always has security and patrols contactable for emergencies, non-urgent police assistance, security accompaniment on campus, and after-hours campus access.

## SAFEZONE

RMIT's exclusive free mobile app helps students raise immediate emergencies or first aid alerts, check in with campus security, and share locations at any time.

## RMIT CONNECT

RMIT Connect is the on-campus contact for international students and their parents, for support with all generic academic and personal enquiries.

“The main campus is located in the heart of Melbourne, voted the world's most liveable city. Cafes, markets, and art facilities are just outside the campus.”  
Tatsuya Shigemitsu,  
RMIT UP English





## CONTACT US

Building 85, 97–99 Franklin Street,  
Melbourne, VIC 3000, Australia

PO Box 12058 A'Beckett Street  
Melbourne, VIC 8006, Australia

[rmit.edu.au/up](http://rmit.edu.au/up)  
+61 3 9657 5800

## CONNECT WITH RMIT UP

 [rmituniversitypathways](https://www.facebook.com/rmituniversitypathways)

 [@rmit.up](https://www.instagram.com/@rmit.up)

 [rmitup](https://www.tiktok.com/rmitup)

 [rmit-up](https://www.linkedin.com/company/rmit-up)

Every effort has been made to ensure the information in this publication is accurate and current at the date of printing. For the most up-to-date information, please refer to the RMIT UP website before lodging your application: [www.rmit.edu.au/up](http://www.rmit.edu.au/up)

RMIT Training Pty Ltd CRICOS Provider Code 01912G  
RMIT University CRICOS provider number: 00122A

 **RMIT UP**  
UNIVERSITY PATHWAYS