

Summary results for Course Experience Survey Semester 1 2021



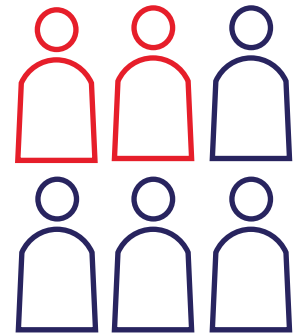
The course experience survey (CES) provides opportunities for students to tell us what they enjoyed and what could be improved about every course they're enrolled in every semester.

Here are some examples of things we're already doing to address your feedback.

Talk to your Course or Program Coordinator if you'd like to know more about what was changed in your course as a result of student feedback.

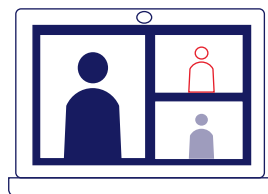
- Learning at RMIT is now **blended**, this means classes will be on campus to allow for more interactivity and you can still enjoy **flexible learning** through digital content outside of class.
- We're doing more across the University to make **assessments more authentic** - that is, practical and relevant to how you'll apply what you learn in the workplace. Some courses are being restructured and course **learning content** recreated so it better aligns with assessments throughout the semester.
- We know students value the focus on **industry connections** at RMIT and we're continuing to employ staff with industry experience and **engaging with industry** to strengthen these experiences.

26% of students completed the CES in Semester 1 2021. The more responses we get, the more we better understand how to support you in your learning and improve our programs.



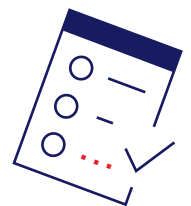
Top issues identified for classes and lectures (including labs and tutes):

- Poor video/audio quality/other technical issues
- Lectures lacking interactivity
- Labs and tutes not aligned with lectures and assessments



Top issues identified for assessments:

- Lacking feedback
- Lacking clear information
- Should have examples to help with completing assignments



Fun fact

We received over 90,000 comments this semester! Among many other topics, students talked most about assessments.

