

# Sustainability Alert

## Construction & Demolition Waste

Issue Date: 28 August 2018

### Context:

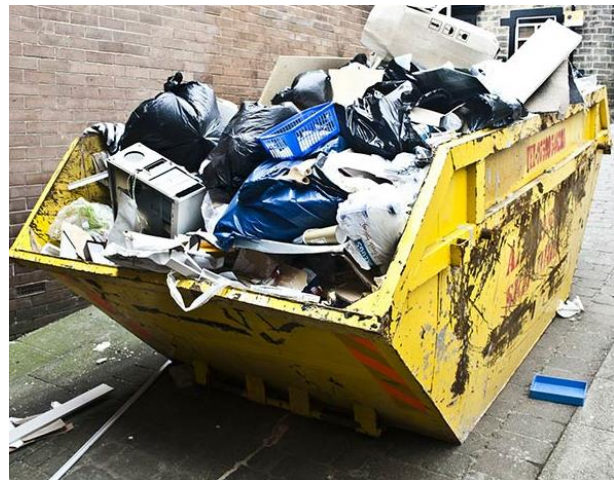
RMIT University has committed to minimising the consumption of resources through sustainable procurement, reuse and recycling. Waste from the construction and demolition industry represents over one third of all waste going to landfill, with over 75 per cent of this is clean, excavated material, such as concrete, bricks and timber which can often be recycled ([Sustainability Victoria](#)). Property Services oversees a significant Capital Development Program, that generates construction and demolition waste. RMIT is seeking to get a clearer picture of how much of this waste is recycled, and look at management actions that can be taken to reduce the amount of materials that are sent to landfill.

### Purpose:

In most cases when Property Services look to engage a building contractor, the development of a Waste Management Plan is part of the Preliminaries/ Scope of Services. Part of this plan is reporting of waste data back to RMIT. Previously, there has been limited waste data collected from building contractors, and generally it relates to specific projects on an ad-hoc basis.

The purpose of collecting waste data will:

- Enable us to report on construction and demolition waste
- Provide us with greater visibility over our construction and demolition waste footprint
- Promote better waste management practices within our projects
- Inform management actions around waste management



### What can you do?

- Identify recyclable waste streams produced onsite, and segregate these wherever possible
- Develop a waste management plan aligned to the waste hierarchy of reduce (avoid), reuse and recycle
- Where spatially constrained, use a waste disposal company that segregates the waste offsite for you
- Educate onsite employees on waste management processes
- Report to RMIT on a monthly basis

### Reporting process:

From the end of September 2018, Property Services Sustainability Team will be asking for data from our Building Contractor across our Capital Development Program. The **monthly** request for data through the RMIT project manager will include a request, per project for:

- Total waste sent to landfill (volume or weight)
- Total waste recycled (volume or weight)
- Total waste reused onsite (volume or weight)

On larger projects, RMIT will be requesting waste management plans be developed prior to commencement of a project.

### Questions?

If there are any questions on the above, please contact the Property Services, Environmental Management representative.

**Rob.Douglas@rmit.edu.au**