

Let's Lead the Way

SUSTAINABILITY AT



Let's begin





What is sustainability?





Sustainability

Sustainability is about harmonising economic health, social inclusion and environmental protection.

Building an inclusive and resilient future for people and planet.

It's environment, health, wellbeing and education too.

It's big and all connected.

This presentation defines our impact areas and showcases some of our programs and initiatives.

This work is coordinated by the Sustainability Team in Property Services. If you have any questions email: sustainability@rmit.edu.au



Our big goal

Carbon neutral
by 2030

This is our most ambitious goal, but it's not our only goal.

It's been chosen because the operation of our buildings has the biggest direct impact on the environment.

It requires constant improvement of how our buildings and systems work, how energy is used and where it comes from.



Learn more: www.rmit.edu.au/sdgs

Helping deliver the Sustainable Development Goals

The UN Sustainable Development Goals (SDGs), are ‘a shared blueprint for peace and prosperity for people and the planet’. Together they show just how broad sustainability is.

As a university we are well placed to impact on almost every SDG and, in doing so, help improve the lives of our staff, students, academics and people everywhere.

Our Vice Chancellor’s Executive has committed to an enterprise wide model to promote and coordinate Sustainable Development Goals activities across the university.

Doing so ensures we are maximising our influence and impact by supporting, promoting and contributing to the SDGs in as many ways as possible.

Our remit is to:

- Demonstrate global leadership by embedding, where appropriate, the SDGs into relevant processes, policies, and practices. This includes the commitment to create measurement and reporting mechanisms to transparently disclose our performance toward achieving the goals and be held publicly accountable for our performance.
- Incorporate the SDGs into the next 5 year strategy, providing an integrated approach for SDGs throughout the university.
- To expand the remit of the RMIT Sustainability Committee and provide direction to it as a coordinating unit for the SDGs across the University, creating a common narrative, collateral, and enabling mechanisms to further the SDGs in curriculum, research, governance, operations and engaged partnerships.

We benchmark our SDG contribution by participating in the Times Higher Education Impact Ranking.

Our most recent ranking places RMIT #10 in the world for total contribution and #1 for Reducing Inequalities.



Let's Lead the Way

SUSTAINABILITY AT



As a global university of technology, design and enterprise, our goal is to lead the way in creating amazing places, providing education that inspires and undertaking research that leads to world changing ideas.

Let's lead the way is also our sustainability ambition. We want to demonstrate global sustainability leadership as an institution, in the initiatives we undertake and in the way we empower our students, staff, community and industry.



Reusable bamboo straws

Our sustainability framework

Our framework shows our impact areas, connected to four core pillars and how they deliver on the UN Sustainable Development Goals.



Our programs

To deliver on our framework, we have hundreds of sustainability programs and initiatives.

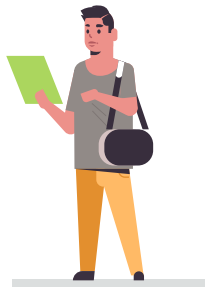
You can tell an RMIT sustainability initiative, because it's tagged...

Let's Lead the Way



SDG Activity at Welcome Day

Each impact
area has a story
of its own



Let's Lead
the Way

Great Experiences



Goal

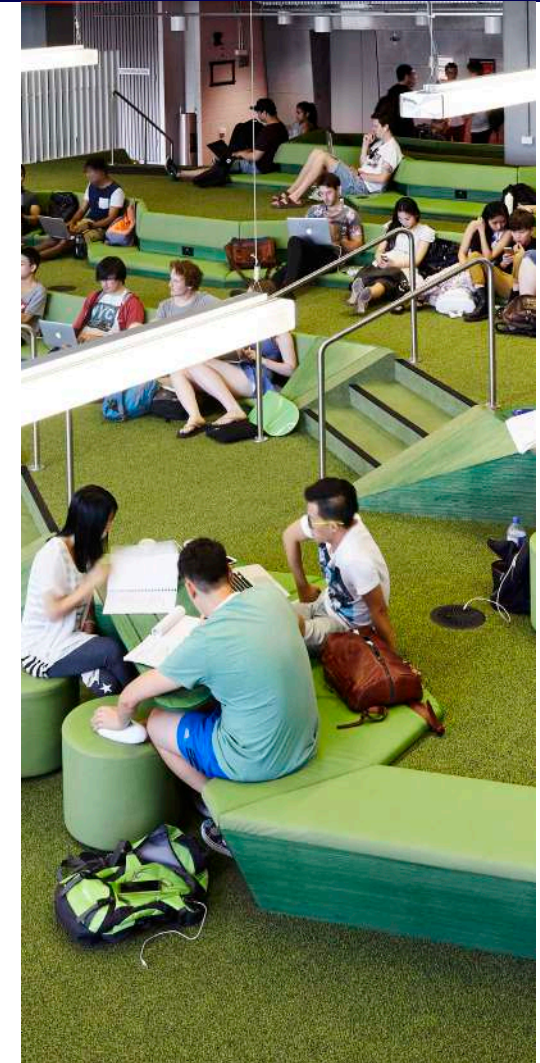
Create inclusive spaces that enhance the experience and wellbeing of our people and have a positive impact on our surrounding environment and society.

Contributing to SDGs



We're focused on

- **Function:** ensuring our building stock is fit for all needs and functions.
- **Heritage:** continuing to protect, restore and celebrate our Indigenous culture and heritage buildings.
- **Environment:** protecting and enhancing biodiversity whilst focusing on Environmentally Sustainable Design.
- **Safety:** ensuring our people feel safe on campus through good design.
- **Wellbeing:** creating healthy, comfortable and engaging spaces.
- **Inclusion:** creating places that reduce inequality and celebrate diversity.
- **Understanding:** increasing awareness of our sustainability features on campus through social media, events and tours.



New Academic Street, Building 10

Goal

Create inclusive spaces that enhance the experience and wellbeing of our people and have a positive impact on our surrounding environment and society.

Contributing to SDGs



How we're delivering

RMIT Design Standards

The RMIT Design Standards set out best practice in sustainable design for all building projects on campus.

New Academic Street

Over \$200m has been spent to reinvent and refurbish five floors across seven older buildings. Achieving a 5 star Green Star As Built rating, the project transformed our campus whilst integrating environmentally sustainable design strategies such as adaptive reuse, naturally ventilated spaces and the low impact cross-laminate timber Garden Building.

OurPlace

OurPlace brings together over 1,000 staff from eight locations across the RMIT city campus. The new fit-out completed in May 2020 at 222 Lonsdale Street is designed to meet the needs of our staff in a high quality, low environmental impact space which is targeting a 5 star Green Star rating.

Upon certification of the OurPlace Project, RMIT will have over 100,000m² of floor space certified under a formal Green Star rating.



OurPlace, Building 106



Garden Building

**Let's Lead
the Way**

Goal

Create a great campus life where choosing sustainable options is easy for our students and staff. Engage with our city partners around the world to support community action and education.

Contributing to SDGs



We're focused on

- **Retail:** encouraging the uptake of sustainable practices in all retail offerings on campus.
- **Events:** increasing the number of campus events that embed practices including reuse, waste reduction and ethical sourcing.
- **Transport:** supporting students and staff to use active transport for sustainability and wellbeing.



Brunswick Dye Garden - naturally dyed fibers

Let's Lead
the Way

Goal

Create a great campus life where choosing sustainable options is easy for our students and staff.

Contributing to SDGs



How we're delivering

Sustainable Retail Framework

The framework is a roadmap to support and encourage our retailers in becoming more sustainable in their practices. Participating retailers are awarded a bronze, silver or gold rating depending on the number of sustainability initiatives they have achieved. The ratings are displayed around the campus to promote their sustainability maturity and to help staff and students make sustainable choices when dining.

Bike hubs

We support cycling through the provision of free secure bike parking across all our campuses to students and staff. Our bike hubs on the City and Bundoora campuses have created a blueprint for inclusive and engaging cycling facilities which greatly improve the user experience, including; change facilities, showers, lockers, drying cupboards, ironing boards and hair dryers.

Campus Store

Our Campus Store now has a Responsible Sourcing Framework to drive sustainability outcomes and minimise ethical risks in our supply chain. The products at the Campus Store showcase student, alumni and Indigenous work.

Sustainable Events Guide

The goal of the sustainable events guide is to help students and staff create events that are economically viable, socially just and environmentally sound. The guide has been designed to be applicable to events of different scales and considers all potential impact areas including; food and water, waste avoidance, community engagement and procurement.

Hydration stations

Hydration stations and drinking fountains have been installed across our campuses to make it easy to refill your own bottles. The bold yellow graphics on the stations show which were designed by an RMIT student.



Hydration station



On campus retailer

Goal

To have informed, engaged and empowered students and staff that are proud advocates for sustainability.

Contributing to SDGs



We're focused on

- **Information:** providing all students and staff with an introduction to sustainability.
- **Engagement:** increased following and interaction on social media channels.
- **Participation:** increased participation in sustainability events, year on year.
- **Connections:** working with like-minded organisations to support community awareness and capacity building.



Sustainability Week Talk

Let's Lead the Way

Goal

To have informed, engaged and empowered students and staff that are proud advocates for sustainability.

Contributing to SDGs



How we're delivering

Staff Development Programs

Creating content for our staff development program 'DevelopMe', which provides opportunities for staff to learn new skill.

Sustainability Space

This space is our dedicated place on campus for information and learning around sustainability.

Staff Green Impact

Our staff engagement program is used to encourage ideas, understanding and participation.

Events

We have a calendar of both internal and external events that help people learn, experience and understand.

Student Sustainability Ambassadors

Our ambassadors help to involve students more deeply in the issues and solutions.

Communication

We have a range of social media channels as well as our web pages, newsletter and published articles to keep our students, staff and wider community informed and engaged.



Workshops in the Sustainability Space

Let's Lead
the Way

— Practical Change



Let's Lead
the Way

Credit: Pacific Hydro - Crowlands Windfarm

Goals

Lead climate action by reducing emissions and adapting to climate risks.

Be carbon neutral by 2030.

Contributing to SDGs



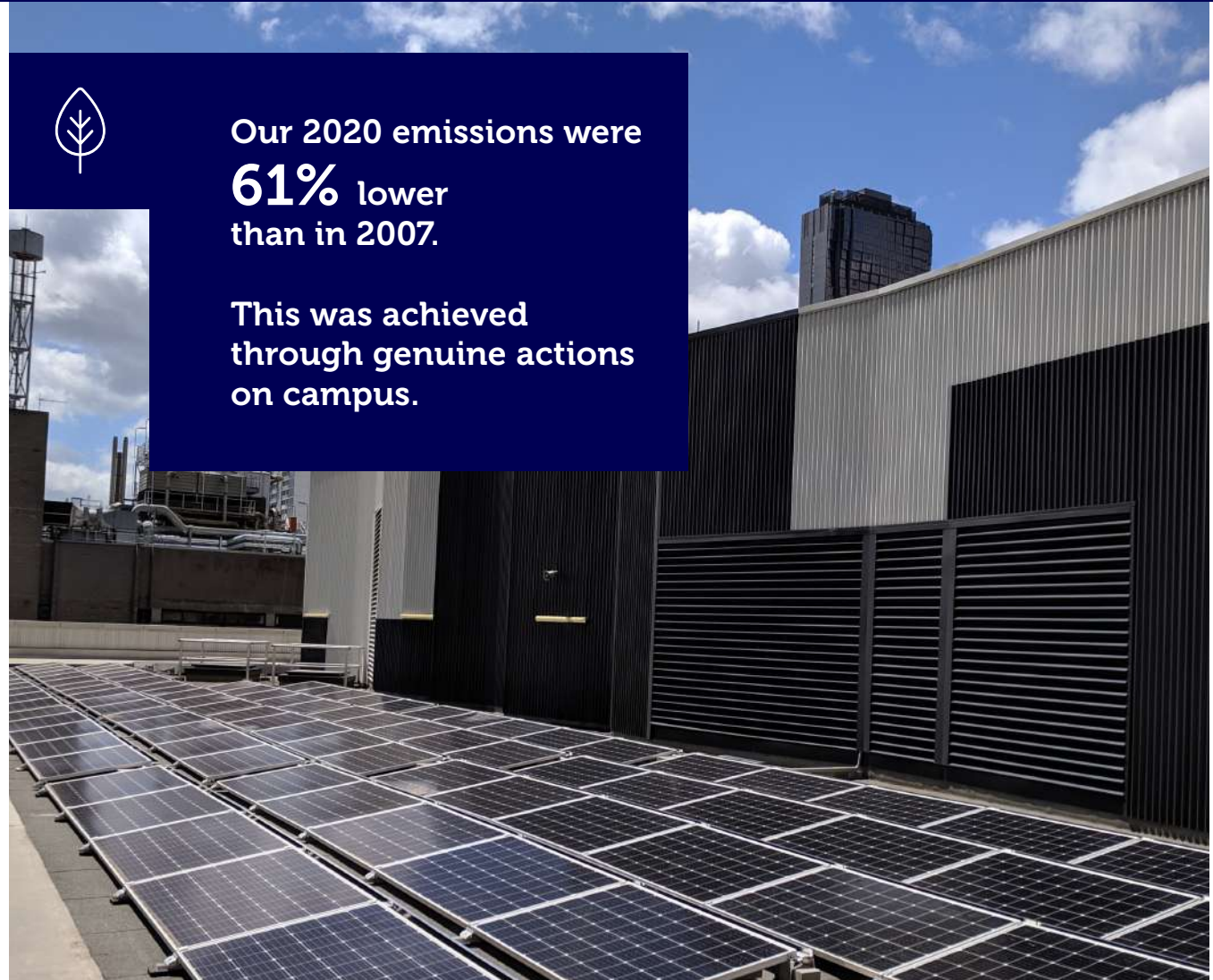
We're focused on

- **Reduction:** of carbon emissions in a complex and evolving built environment.
- **Adaptation:** to more frequent and intense weather events.
- **Partnerships:** that support the development of renewable energy.



Our 2020 emissions were
61% lower
than in 2007.

This was achieved
through genuine actions
on campus.



Building 80 Solar

Let's Lead
the Way

Goals

Lead climate action by reducing emissions and adapting to climate risks.

Be carbon neutral by 2030.

Contributing to SDGs



How we're delivering

Carbon Management Plan

This plan outlines practical actions to be carbon neutral by 2030.

Climate Adaptation Plan

This plan embeds climate resilience into operational processes and projects to ensure we maintain operations despite any extreme weather events.

Energy Efficiency Buildings

RMIT has invested \$128m in 100% LED lighting, efficient control systems, connected precincts tied to efficient central infrastructure and on-site energy generation, all to ensure energy efficiency is embedded into the way we build and develop our campuses.

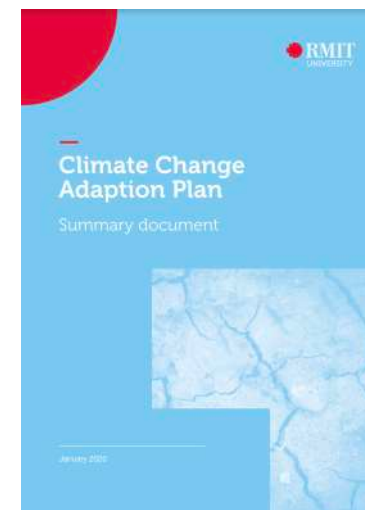
Renewables

RMIT has installed solar PV across the rooftops of the University building portfolio, maximising our use of on-site renewable energy generation wherever possible. We have 600kW (2,500 panels) of on-campus solar.

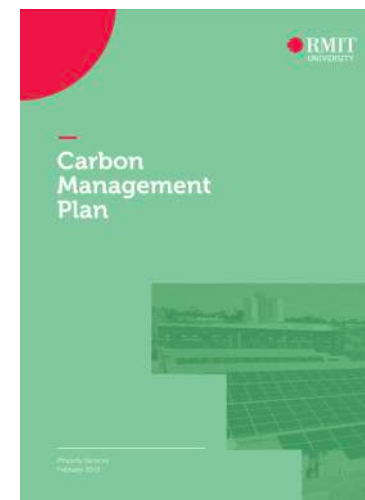
RMIT has demonstrated sustainability leadership through our role in two large-scale renewable energy purchasing groups with the City of Melbourne - the **Melbourne Renewable Energy Projects (MREP) 1 & 2**.

In MREP 1, fourteen like-minded organisations combined their purchasing power to support the construction of a 39-turbine, 80 MW windfarm at Crowlands, near Ararat, providing 25% of the RMIT's electricity.

In MREP 2, RMIT led another group of Melbourne universities and businesses to source wind energy produced at the Yaloak South Wind Farm near Ballan, this project increased the proportion of renewable energy in the University's grid supply to 70%.



Climate Change Adaptation Plan



Carbon Management Plan

Let's Lead the Way

Goal

Be a leader in implementing circularity principles into the built environment and campus operations.

Contributing to SDGs



We're focused on

- **Avoidance:** transforming our supply chain to avoid waste and consider end of life.
- **Re-use:** re-imagining, re-purposing and up-cycling our assets.
- **Recycling:** where waste can't be avoided or repurposed, ensure systems are in place to recycle it beyond the linear system of 'take, make and waste'.
- **Education:** empowering and informing our community to think beyond the linear system.



The circular economy allows for the avoidance of waste through good design and effective recovery of existing materials that can be repaired, reused, and remanufactured.



Let's Lead
the Way

Sustainability Workshop

Goal

Be a leader in implementing circularity principles into the built environment and campus operations.

Contributing to SDGs



How we're delivering

Circular Economy Project

- Extending the life of our existing assets by repairing, reusing, and up-cycling materials.
- Rethinking our processes to ensure our plans and tools set the standard and encourage circular thinking.
- Creating a methodology for circularity involving our academic experts.
- Measuring the social, environmental and economic positive of circular thinking.

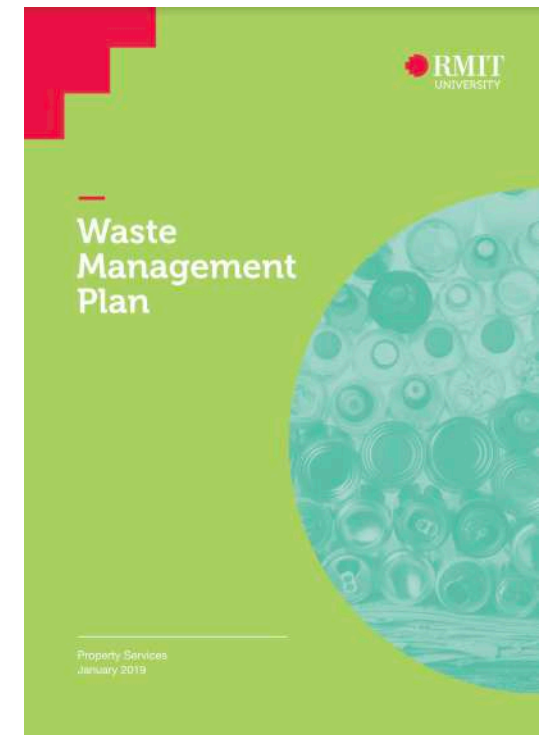
Waste Management Plan

Our Waste Management Plan provides direction on avoiding the creation of waste then encourages the reduction, reuse and recycling of materials, diverting waste from landfill.

From the plan we have standardised our bin systems, focused on minimising construction and demolition waste and rolled organics collections to all of our retailers.



In 2020 we ensured
that **90%**
of construction and
demolition waste
was diverted from landfill



Waste Management Plan

**Let's Lead
the Way**



Let's Lead
the Way

What about coffee cups?

Single-use coffee cups are a high touch and emotive issue, avoiding the use of them sits within the concept of a circular economy.

With so many single-use cups and food containers coming in from retailers beyond our campuses, there is no one simple solution, so we continue to work with retailers and students to implement and trial methods of reduction.

What can you do?

Simple, don't use a single use coffee cup in the first place. Choose to use a reusable cup.

RMIT Campus Store stocks reusable coffee cups

Water



Goal

Reduce water use intensity across our campuses.

Contributing to SDGs



We're focused on

- **Consumption:** reducing total water consumption.
- **Efficiency:** installing water efficient fixtures and fittings.
- **Capture:** capturing and storing water on our sites for reuse.
- **Water Sensitive Urban Design:** incorporating water sensitive urban design (WSUD) in all applicable capital projects.

How we're delivering

Water Sensitive Urban Design

WSUD is a key feature of our Bowen Street landscaping and Brunswick Landscape Master Plan.

Water harvesting

We have undertaken major water harvesting initiatives on campus, installing rain water, grey water, fire water testing reuse storage tanks.

Water efficiency

We have installed 1,500 water efficient fixtures throughout our building.

Increasing visibility

We have 40 smart meter devices installed across our buildings.



RMIT now has
1.3 million litres
of on-site water storage



WSUD integrated into NAS Landscaping and Bowen Street

Let's Lead
the Way

Where's the water?

There are tanks hidden (and not so hidden) all over campus:



Under the University Lawn (behind Building 1)



In the basement of Building 80



'Milk bottle' water tank, Building 9



Out the front of Building 11



Under the Bundoora West Sports Fields



Two old boat testing tanks have been repurposed under Building 10

The water captured and stored is used for toilet flushing and landscape irrigation.

Act Ethically



Let's Lead
the Way

Fashion Revolution Week event

Goal

Ensure institution-wide excellence in our governance structures.

Contributing to SDGs



We're focused on

- **Making sustainability an organisational priority** by embedding sustainability principles into all university activities and ensuring decision making reflects RMIT's values.
- **Behaving as a socially responsible organisation** and ensuring all our activities have a positive impact on individuals and communities.
- **Achieving a culture of integrity** by ensuring our strategies, processes, supply chains and partnerships meet fundamental responsibilities in the areas of human rights, labour, environment and anti-corruption.

Let's Lead
the Way



University Lawn

Goal

Ensure institution-wide excellence in our governance structures.

Contributing to SDGs



How we're delivering

Sustainability Committee

The committee reports directly to the Vice Chancellor's Executive VCE and acts as the governance body with oversight of the development and implementation of sustainability initiatives across all areas of the University.

Sustainability Policy

Our policy sets the standard by which we measure all of our activities to ensure we achieve our sustainability outcomes.

CSR Framework

The framework identifies, screens and monitors individuals, businesses or organisations that could create a potential reputation or ethical risk to the University.

SDGs Working Group

RMIT is using the SDGs to positively transform its sustainability strategy and governance approach to become a global sustainability leader in the education sector.

Sustainability Reporting

RMIT has produced an annual sustainability report since 2015 in accordance with the Global Reporting Initiative (GRI) Standards.



Student Sustainability Ambassador holding Sustainability Annual Report



Did you know?

As a signatory to the UN Global Compact, we use its ten principles to guide our approach to governance. We also host the GCNA on campus.



Meet the Sustainability Team Event



Goal

Invest in a way that helps keep global temperature rise under two degrees and supports sustainable societies.

Contributing to SDGs



We're focused on

- **Climate Change:** ensuring our portfolio minimises impact on climate change, with a particular focus on fossil fuels.
- **Health & Wellbeing:** screening for issues relating to public health and wellbeing.
- **UN Global Compact:** monitor our portfolio in relation to globally accepted norms on corporate sustainability behaviours in the areas of Human Rights, Labour, Environment and Anti-Corruption.



The RMIT Philanthropy Fund supports scholarships, research and other major projects. Thanks to the generous support of our donors RMIT was able to transform the Capitol Theatre, a Melbourne icon.

Capitol Theatre

Let's Lead the Way



Goal

Invest in a way that helps keep global temperature rise under two degrees and supports sustainable societies.

Contributing to SDGs



How we're delivering

Responsible Investment Principles

We have developed a set of Responsible Investment Principles to guide our investment decisions. We publicly disclose our progress in the Sustainability Annual Report. RMIT has no exposure to fossil fuels in its Philanthropic Investments to support the transition to a low carbon future.

UN Principles for Responsible Investment

RMIT requires investment managers engaged by the University to be a signatory to the UN Principles for Responsible Investment (PRI). This means they must act on environmental, social, and corporate governance (ESG) issues and be transparent in their approach.

Impact Investing

RMIT is working with Skalata Ventures, a not-for-profit organisation that runs an independently funded seed program to scale and grow early stage companies into significant and sustainable businesses. This fund supports future pathways and seed investment for the start-up community, such as those which are developed through the RMIT Activator program.

Let's Lead the Way



Sustainability session at RMIT Activator

Sustainable Procurement



Goal

Use our buying power to drive improved practices in the supply chain and drive strategic outcomes for the University.

Contributing to SDGs



We're focused on

- **Meeting the highest standards:** aligning with local and international standards.
- **Meeting student and staff expectations:** delivering on the expectations of our people.
- **Life cycle approach:** having the most positive environmental, social and economic impacts possible over the entire life cycle of what we procure.

Let's Lead
the Way



Campus store

Goal

Use our buying power to drive improved practices in the supply chain and drive strategic outcomes for the University.

Contributing to SDGs



How we're delivering

Sustainable Procurement Plan

All tenders have a weighting for sustainability, CSR, Indigenous and student outcomes. We also drive sustainability outcomes through our contract management process with existing vendors. This is done in alignment with international standard ISO 20400:2017 Sustainable procurement.

Modern Slavery

RMIT is committed to ensuring our policies, processes and systems identify and address modern slavery risks in our operations and supply chains.

Supplier Code of Conduct

Our Code of Conduct ensures all suppliers reach dedicated standards in corporate responsibility.

Fair Trade University

In 2009 RMIT, along with Macquarie University was announced as the first Fair Trade University in Australia by the Fair Trade Association. We are committed to using fair trade products where possible on our campuses, and promoting fair and ethical trade.



Sustainable Procurement Plan

Beyond Boundaries

This pillar has the biggest impact - our core business of learning & teaching and research creates the greatest change. We empower our students to be change-makers and provide innovative thought-leadership to shape a sustainable future.



Let's Lead
the Way

Goals Jam Melbourne 2019

Sustainability in Curriculum



Goal

Helping to shape future leaders with the skills, talent and passion to drive positive change.

Contributing to SDGs



We're focused on

- **Design:** we have been redesigning our programs to align with the University strategy, enhancing the focus on inspiring teaching, connected pathways, industry relevance, enterprise, digitally enabled and inclusive education.
- **Embedding the SDGs:** mapping and assessing how our curriculum helps deliver on the SDGs, including formal class content, innovative pedagogy, frameworks and assessment.
- **Academic Professional Development:** adding a sustainability module to the framework so our academics can gain new skills and competencies whilst being supported to develop in their careers.

Let's Lead
the Way



During the restoration of Building 1 there was a curated program of student-produced artworks across the construction hoardings. The artworks explore the relationships between students and staff and the landscapes and communities they are a part of.

BiodiverCity, by Esther van Noppen

Sustainability in Curriculum



Goal

Helping to shape future leaders with the skills, talent and passion to drive positive change.

Contributing to SDGs



How we're delivering

Online learning

We provide micro-credentials to build capabilities.

Living Labs

We work with academics and students to solve sustainability challenges.

Guest lectures

Guest lectures help bring fresh perspectives.

Learning and adapting

We connect with industry and others in our sector to innovate and share best practice.



Staff and students attend sustainability week talk from academic experts

Let's Lead
the Way

Sustainability in Research



Goal

Build on the strength of RMIT's connections to tackle real world challenges.

Contributing to SDGs



We're focused on

- **Collaboration:** building on the strength of RMIT's connections to tackle real world challenges, in partnership with industry and other research organisations.
- **Impact:** solving critical local, national, regional and global problems to deliver significant economic, social and environmental benefits to achieve the SDGs.
- **Capability:** RMIT has eight Enabling Capability Platforms (ECPs) which connect researchers from multiple disciplines under thematic umbrellas, allowing the University to deploy its areas of research excellence effectively and efficiently.

Let's Lead
the Way



Dr Claire Boulange, Expert in urban analytics for healthy liveable cities

Sustainability in Research



Goal

Build on the strength of RMIT's connections to tackle real world challenges.

Contributing to SDGs



Some of our Enabling Capability Platforms

Urban Futures ECP

This research informs how cities can be more equitable, sustainable and accountable by providing integrated planning and design solutions for rapid population growth and urbanisation.

Social Change ECP

This involves making sense of human progress, from the local scale to the global, enabling governments, businesses and communities to respond in ways that benefit and strengthen society.

Global Business Innovation ECP

This involves leading and harnessing research-driven innovation within Australia and worldwide then translating findings into innovative products, services, systems and models.

Design and Creative Practice ECP

This research asks how design and creativity can be deployed to reimagine health, resilience and wellbeing. In addition how play can be used as a probe for creative solutions, how to reimagine a world that has equality, biodiversity and sustainability at its core and models for conceptualising design and creativity as creating value for industry.



RMIT Storey Hall

Let's Lead the Way

Partnerships



Goal

Be the partner of choice for all organisations seeking to realise their sustainability goals.

Contributing to SDGs



We're focused on

- **Collaboration:** working with all sectors and sizes, including private, public, government and not-for-profit, from local start-ups to global businesses.
- **Innovation:** enabling partners to connect with student talent, access collaborative funding schemes for research and development, and find fresh ideas to encourage creativity and innovation.
- **Scale:** collaborating to achieve impact at scale.

Let's Lead
the Way



SDG Workshop

Partnerships



Goal

Build on the strength of RMIT's connections to tackle real world challenges.

Contributing to SDGs



Some of our partnerships

Jean Monnet Sustainable Development Goals Network

This network brings together researchers, policy think tanks and non-government organisations to better deliver on the SDGs.

UNEVOC Centre

This focuses on the Vocational Education curriculum and pedagogy for best practice education, student benefit and leadership development.

Cooperative Research Centres (CRCs)

RMIT is part of three major new CRCs investing more than \$420m to tackle the critical challenges of food waste, future fuels and digital health.



Associate Professor Karli Verghese (REDUCE program leader, RMIT) with partners at the launch of the Fight Food Waste CRC.

Let's Lead
the Way



Ngarara Place, Indigenous Courtyard

Complementary programs

Diversity and Inclusion -

Led by the values of inclusion and courage, RMIT aims to create an environment where everyone can contribute, grow and succeed. Diversity and inclusion is celebrated and equal opportunity is an absolute.

[Read more here](#)

Mental health and wellbeing -

At RMIT, we believe that investing in mental health and wellbeing is essential for our success. We are passionate about RMIT being a supportive, diverse and inclusive place to learn, research and work.

[Read more here](#)

Respect RMIT -

The aim of the Changing the Course three-year framework is to build a community where every student and staff member is not only safe, but respected, valued and treated as an equal.

[Read more here](#)

Respect for Indigenous cultures in Australia -

RMIT recognises and acknowledges the Bundjil Statement, which helps all RMIT community to respectfully work, live and study on Aboriginal Country through a dhumbali (commitment) to not harm the wurneet (waterways), biik biik (lands) and bubups (children) of Bundjil. RMIT supports the rights and the self-determination of Indigenous peoples and acknowledges the importance of Indigenous knowledge in preserving and protecting place for current and future generations.

[Read more here](#)

—
These programs sit outside the RMIT Sustainability Program, but are complementary and also help deliver on the SDGs.



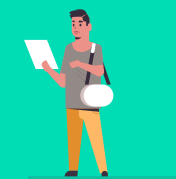


Impact to date



Let's Lead
the Way

Impact to date



- **2003**
Signatory to the UN Global Compact

- **2009**
Joint first Fairtrade university in Australia



- **2011**
The Advanced Manufacturing Precinct Building achieves 5* Green Star design rating

- **2014**
Winner of the International Green Gown Continuous Improvement Institutional Change Award

- **2016**
25% carbon reduction commitment achieved, four years ahead of schedule

\$1M Bike Hub opened and new infrastructure was installed to support cycling on all campuses



- First RMIT Sustainability Week

Doubled on-site storage for water harvesting

Founding partner of Take2 Pledge on climate action

- **2018**
RMIT commits to be carbon neutral by 2030

Green Impact Program launched

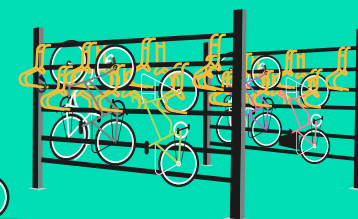
Corporate Social Responsibility Framework adopted

Committed to action on the SDGs and created a dedicated role



- Green Gown awarded for Continuous Improvement: Institutional Change

Sustainability Microcredentials launched



- **2008**
Commitment to 25% carbon reduction by 2020

- **2010**
Inaugural partnership with the Sustainable Living Festival

Heritage Francis Ormond Building refurbishment achieves a 5* Green Star design rating

- **2012**
Design Hub and Swanston Academic Buildings achieve 5* Green Star design ratings

First Climate Change Adaptation Plan launched

- **2015**
First RMIT Sustainability Annual Report launched

Bundoora West Student Accommodation achieves 5* Green Star design rating

- **2017**
Responsible Investment Principles adopted

Sustainable Events Guide launched

Student Sustainability Ambassador Program launched

Sustainability Space opened on Campus

- New Academic Street project achieves 5* Green Star As-Built rating

Awarded a Green Gown for Learning and Teaching Skills

Green Gown Award for Facilities and Services Building 51 Bike Hub

- **2019**
Property Services Environmental Management System certified to ISO 14001

Dedicated SDGs Website established and Working Group created

25% of electricity is sourced from our windfarm outside Ararat

2019 SDG Working Group and VCE commitment

- **2020**
Sustainable Retailer Framework Launched

Second partnership formed to support a new wind farm

RMIT came 10th globally in the Times H.E. Impact Ranking and first for SDG 10

Green Gown Award for Creating Impact



Let's Lead the Way

SUSTAINABILITY AT



For more information on sustainability at RMIT,
please visit

www.rmit.edu.au/sustainability

or contact

sustainability@rmit.edu.au

Note: All images were taken prior to COVID-19 protocols