

# October 2018

# RMIT Career Advisers' Update

## What's in this Issue

- [New Engineering Pathway Requirements](#)
- [Change of Preference, 14-19 December](#)
- [SWOTVAC Study Space](#)
- [The Deadly Day of Science](#)
- [New font to aid with memory retention during study](#)
- [Student wins Melbourne Fashion Week award](#)
- [New exhibition reveals the dynamics of air](#)
- [World-first short courses in VR and AI using Amazon Sumerian](#)
- [Student Recruitment Key Contact Details](#)

## Change of Preference, 14-19 December

We are preparing to assist you and your students through the next stage of their application process, with services available during VTAC Change of Preference.

### Career Advisor hotline (03) 9925 2555

### Local student hotline (03) 9925 2260 and online chat:

Friday 14 December, 8.30am – 5:30pm  
Saturday 15 December, 10am – 4pm  
Sunday 16 December, 10am – 4pm  
Monday 17 December, 8.30am – 5:30pm  
Tuesday 18 December, 8.30am – 5:30pm  
Wednesday 19 December, 8:30am – 12pm

### Face-to-face drop in service:

Friday 14 December, 9am – 5pm  
Monday 17 December, 9am – 5pm  
Tuesday 18 December, 9am – 5pm  
Wednesday 19 December, 9am – 12pm

### COP Expo, City Campus:

Monday 17 December, 2 – 5pm

### Tours, City Campus:

Tuesday 18 December, 4pm, 4:30pm and 5pm  
Wednesday 19 December, 9am, 9:30am and 10am

More information: [www.rmit.edu.au/change-of-preference](http://www.rmit.edu.au/change-of-preference)

## SWOTVAC Study Space

Secondary school students are invited to experience what studying is like as an RMIT student, by having access to our new study spaces during SWOTVAC.

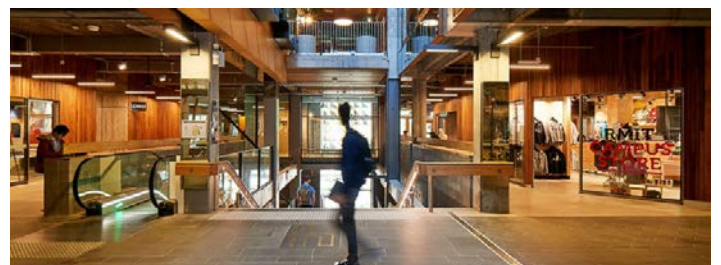
**Location:** RMIT City Campus, Building 10 (376-392 Swanston St), Levels 4-13

**Date:** 22-26 October

**Time:** All Day

Free Wi-Fi access provided. Also, our friends at RMIT Boost Juice are offering 20% off a Boost for each student.

[Click here for a flyer to share with your students.](#)



## What's on at RMIT

<a href="#">Dynamics of Air Exhibition</a> RMIT Gallery	Friday 14 September to Saturday 17 November
<a href="#">EnGenius Engineering Exhibition</a> Melbourne Convention and Exhibition Centre	Wednesday 17 October
<a href="#">Experience Surveying</a> Yarra Bend Park	Thursday 15 November, Thursday 13 December
<a href="#">Extension Studies</a> applications due	Friday 14 December
<a href="#">Deadly Day of Science</a> RMIT Bundoora campus	Friday 16 November
<a href="#">Change of Preference Expo</a> RMIT City Campus	Monday 17 December
Change of Preference City Campus Student Tours	Tuesday 18 December, Wednesday 19 December

## New Engineering Pathway requirements

It will now be easier for RMIT students to use pathways to gain entry to our Bachelor of Engineering courses with amended GPA requirements for articulation.

- The [Associate Degree in Engineering Technology](#) provides guaranteed pathways into relevant Bachelor degrees with any GPA requirements (previously GPA 2.0 was required).
- [Advanced Diploma in Engineering](#) provides guaranteed pathways into relevant Bachelor degrees with GPA 2.0 requirements (previously GPA 3.0 was required).

# October 2018

## RMIT Career Advisers' Update

### The Deadly Day of Science



## DEADLY DAY OF SCIENCE

The Deadly Day of Science is a science experience day for Aboriginal and Torres Strait Islander students at RMIT Bundoora. This is a free event open to all year 7 to 10 Aboriginal and Torres Strait Islander students to come along for a day of hands-on science workshops, Indigenous cultural tour and enjoy a pizza lunch at the Ngarara Willim Centre.

Friday 16 November at the RMIT Bundoora Campus.

[Registrations are now open](#) and places are limited.

### A font to remember

## Sans Forgetica

RMIT has just launched Sans Forgetica, the world's first typeface specifically designed to help people retain more information and remember more of typed study notes. It was developed in a collaboration between typographic design specialists and psychologists, combining psychological theory and design principles to improve retention of written information.

It is an excellent tool for students studying for exams. The font was developed using a learning principle called 'desirable difficulty', where an obstruction is added to the learning process that requires us to put in just enough effort, leading to better memory retention to promote deeper cognitive processing.

Sans Forgetica is available free to download.  
<http://sansforgetica.rmit/>

### Student wins Melbourne Fashion Week award

An RMIT student has won the prestigious student award at Melbourne Fashion Week (MFW) for her Choose Your Own Adventure-inspired project.

[Bachelor of Fashion \(Design\) \(Honours\)](#) student Helena Dong was announced as the winner during the MFW student runway at Melbourne town hall on September 5.

The student runway showcases the creativity and daring of student designs, while giving fashion aficionados a tantalising glimpse of the potential 'next big thing' in Australian fashion.



*Bachelor of Fashion (Design) (Honours) student Helena Dong pictured with models wearing her clothes at the MFW 2018 Student Runway.*

### New exhibition reveals the dynamics of air

RMIT Gallery's latest exhibition captures the beauty, dynamics and sensuality of air in our built environment and its critical role in designing for a zero-carbon future.

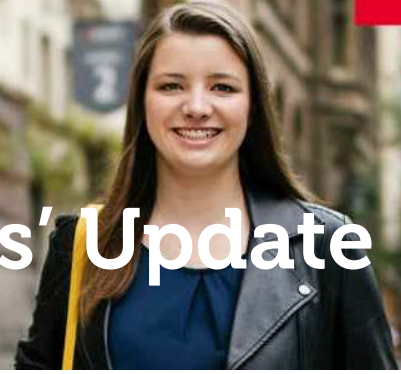
Through a stunning survey of commissioned and current projects, this exhibition will engage with the interface of air, lived space and architecture. *Dynamics of Air* will explore themes of aesthetics and representation, experiential environments and atmospheres, inflatable structures, architectural surface and microturbulence.

A series of free public talks and performances are happening in October and November.

[Find out more and register.](#)

# October 2018

# RMIT Career Advisers' Update



## World-first short courses in VR and AI using Amazon Sumerian

RMIT has announced a new collaboration with Amazon Web Services that is set to enhance the student experience and transform the education sector. In a world-first, we're joining forces to create the concept for an Artificial Intelligence Digital Assistant (AIDA) that allows students to get the help and support they need in navigating university life – removing the need to wait in queues and fill out enquiry forms.

Driven by a need to address technology-driven changes in both the workplace and the classroom, three new digital short courses will also be launched as part of the partnership – *Sumerian Mixed Reality*; *Developing AI Strategy*; and *AI and Emerging Technologies for Strategic Marketing*. With this launch, we've become the world's first university to offer a short course in virtual reality and augmented reality.

Global augmented reality and virtual reality revenue are expected to hit \$US150 billion by 2020 – transforming how we learn and how businesses operate. A focus on virtual reality and artificial intelligence will support growing demand and address skills gaps in these growing technological fields.



RMIT students immerse themselves in augmented reality technology.

## Planning ahead for 2019

We are now taking bookings for events in 2019. Please contact our team to talk about how we can work with you and your students.

- Campus visits
- Presentation in your school
- Academic and student speakers
- School expos

[Book an event](#)

## School Contact Details

Do you have a new staff member in your Careers office? Or a new phone number or email address?

Please contact us to ensure that we have your most up-to-date details.

## Key Contacts

**Local Student Recruitment – General**  
03 9925 2555  
[student.recruitment@rmit.edu.au](mailto:student.recruitment@rmit.edu.au)

**Kate Tangas – Manager, Student Recruitment**  
03 9925 0374  
[kate.tangas@rmit.edu.au](mailto:kate.tangas@rmit.edu.au)

**Melissa Robinson - Student Recruitment Officer**  
03 9925 3991  
[melissa.robinson@rmit.edu.au](mailto:melissa.robinson@rmit.edu.au)

**Cody Moore - Student Recruitment Officer**  
03 9925 3993  
[cody.moore@rmit.edu.au](mailto:cody.moore@rmit.edu.au)

**Annika Forstmanis – Student Recruitment Officer**  
03 9925 0469  
[annika.forstmanis@rmit.edu.au](mailto:annika.forstmanis@rmit.edu.au)

**Lauren Louey – Student Recruitment Officer**  
03 9925 0469  
[lauren.louey@rmit.edu.au](mailto:lauren.louey@rmit.edu.au)

**Harry Suganthan – Marketing and Recruitment Assistant**  
03 9925 0469  
[haresh.suganthan@rmit.edu.au](mailto:haresh.suganthan@rmit.edu.au)

Please feel free to contact any member of the Student Recruitment team for RMIT related inquiries.

## International Student Recruitment

**Sabina Ranjit – Regional Manager (AusPac)**  
03 9925 0226  
[sabina.ranjit@rmit.edu.au](mailto:sabina.ranjit@rmit.edu.au)

**Tracey Wang – Regional Coordinator (AusPac)**  
03 9925 1342  
[tracey.wang@rmit.edu.au](mailto:tracey.wang@rmit.edu.au)